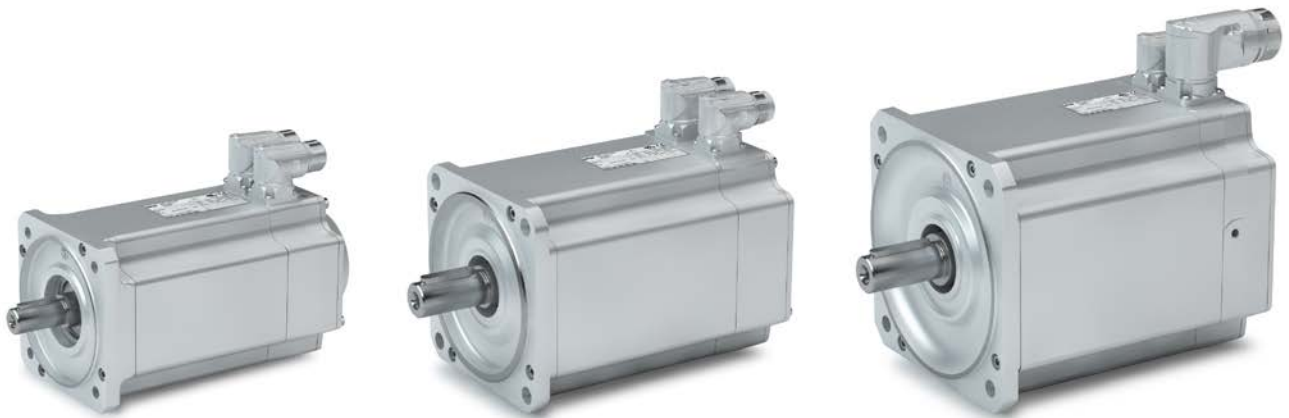


Medium dynamics in a compact design.



m850 – the compact synchronous servo motors for applications in the areas of positioning, robotics and packaging technology as well as for handling systems. Combining these motors with i950, i700, 9400 and 8400 TopLine servo inverters results in powerful drive solutions in the torque range from 4.8 to 200 Nm.

The EASY Product Finder helps you to find the right product.



Highlights

- Compact design
- Easy controllability thanks to an advantageous ratio of the inertia of the load and of the motor
- Optimal smooth running characteristics for exact work results
- The smooth housing surface makes it perfect for use in the food industry
- Simplicity due to robust resolver as standard and multiturn sin/cos encoder for high precision
- Digital absolute value encoder for One Cable Technology
- Easy assembly and easy servicing thanks to bayonet lock connectors with swivel connector boxes

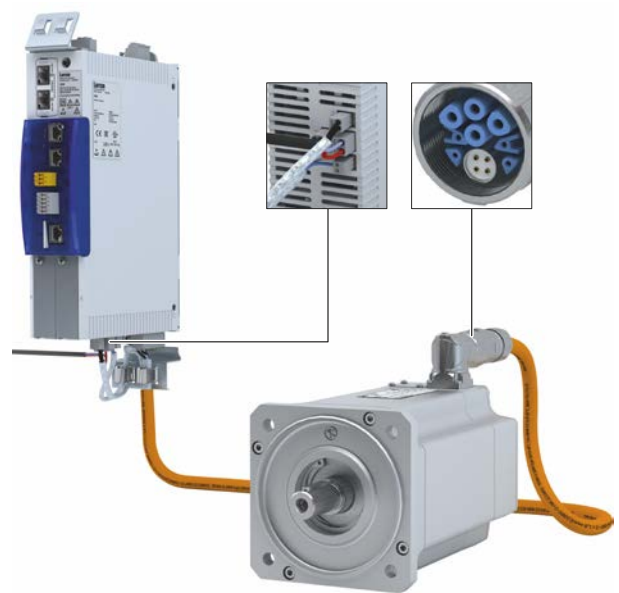
Synchronous servo motor m850

The modular system for your application

The m850 synchronous servo motors with their scalable modular system extend Lenze servo motors for applications in the medium dynamic range.

Optimized with the following built-on accessories:

- Spring-applied brakes
- Feedback systems: Resolver, absolute value encoder, digital absolute value encoder for One Cable Technology
- Plug-in connector
- Comprehensive range of system cables: Motor connection, feedback connection



One Cable Technology

Technical data

Self-ventilated

	n_N	M_0	M_{max}	M_N	P_N	J
	[rpm]	[Nm]	[Nm]	[Nm]	[kW]	[kgcm ²]
m850-S120/S	4000	6.5	14.5	4.8	2	6.5
m850-S120/M	4000	11	29	7.4	3.1	12.4
m850-S120/L	4000	15	44	9	3.7	18.2
m850-S140/S	3200	11	26	8.5	2.9	15.7
m850-S140/M	3200	21	53.5	14	4.8	30.1
m850-S140/L	3200	28	80	17.4	5.9	44.6
m850-S190/S	3000	27	71	16	5.0	60.8
m850-S190/M	3000	46	120	24	7.5	117.0
m850-S190/L	2500	67	200	35	9.2	193.0

Standards and operating conditions

Degree of protection	EN 60529	IP54 (IP65 housing)
Approvals	EAC, CSA, cURus and UkrSepro	
Temperature class	IEC / EN 60034-1 Utilization	F
	IEC / EN 60034-1 Insulation system	F
Climatic conditions	Storage temperature	-20 ... +60 °C
	Operating temperature	-20 ... +40 °C